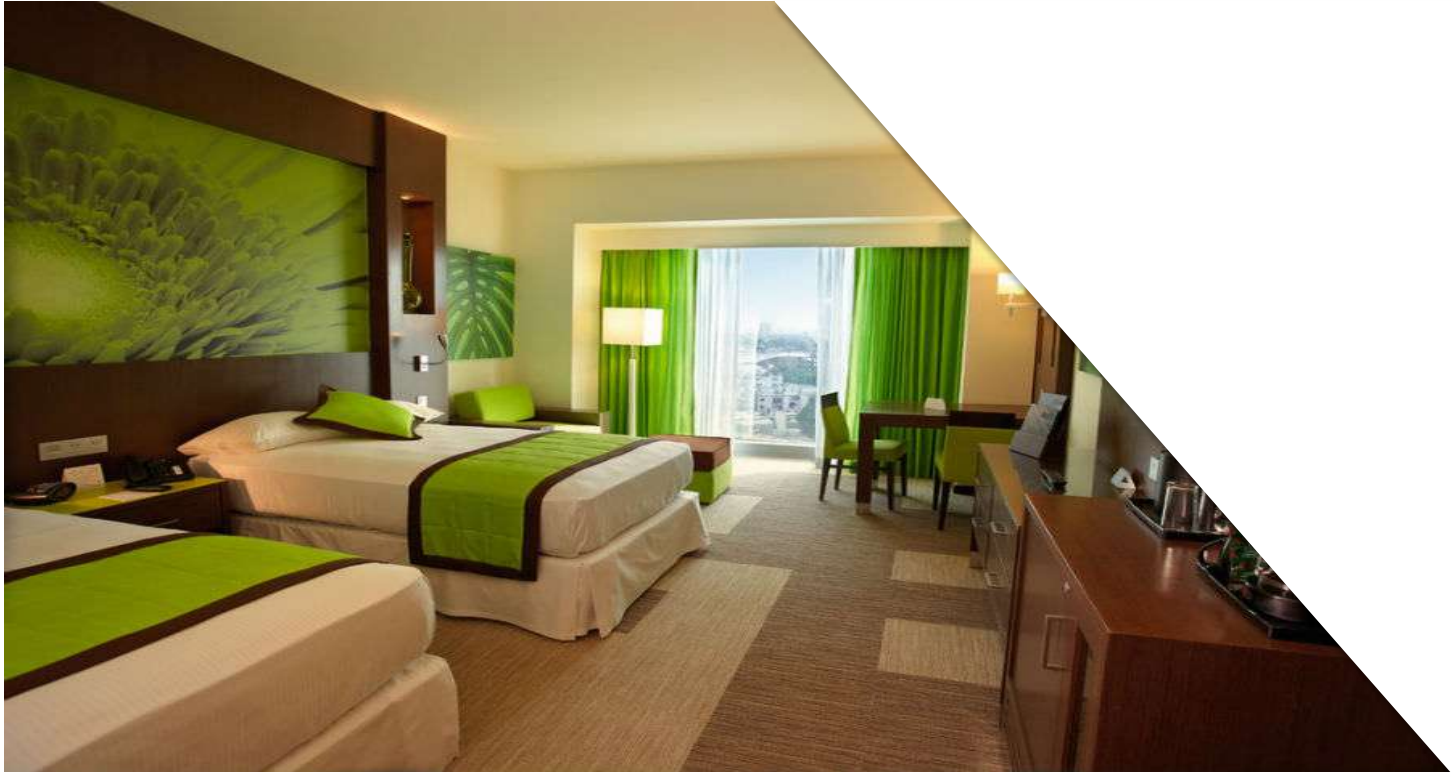
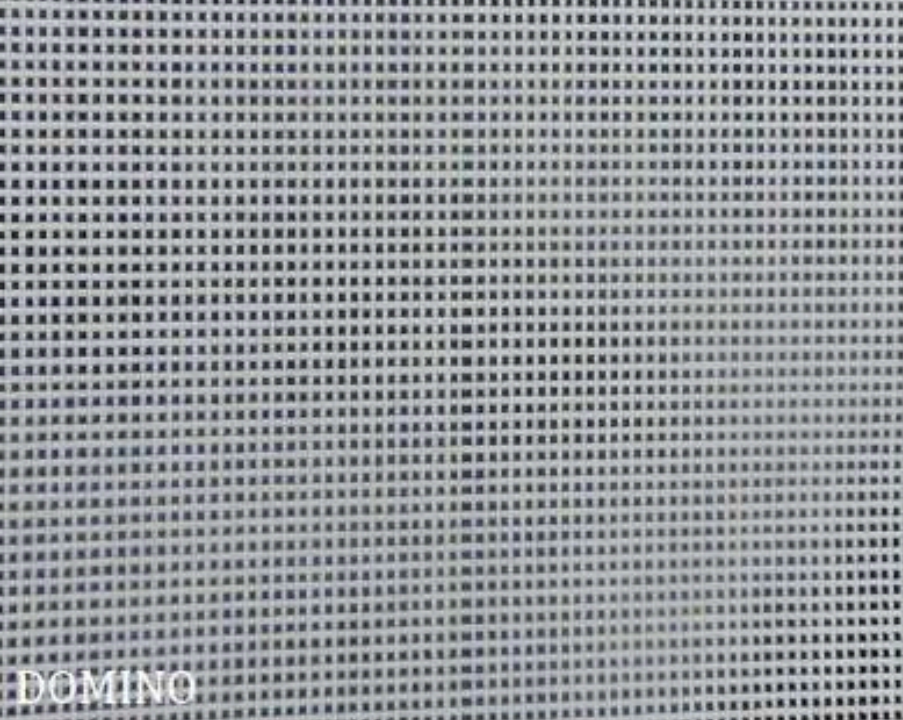


WUUK



COLECCIÓN 2017





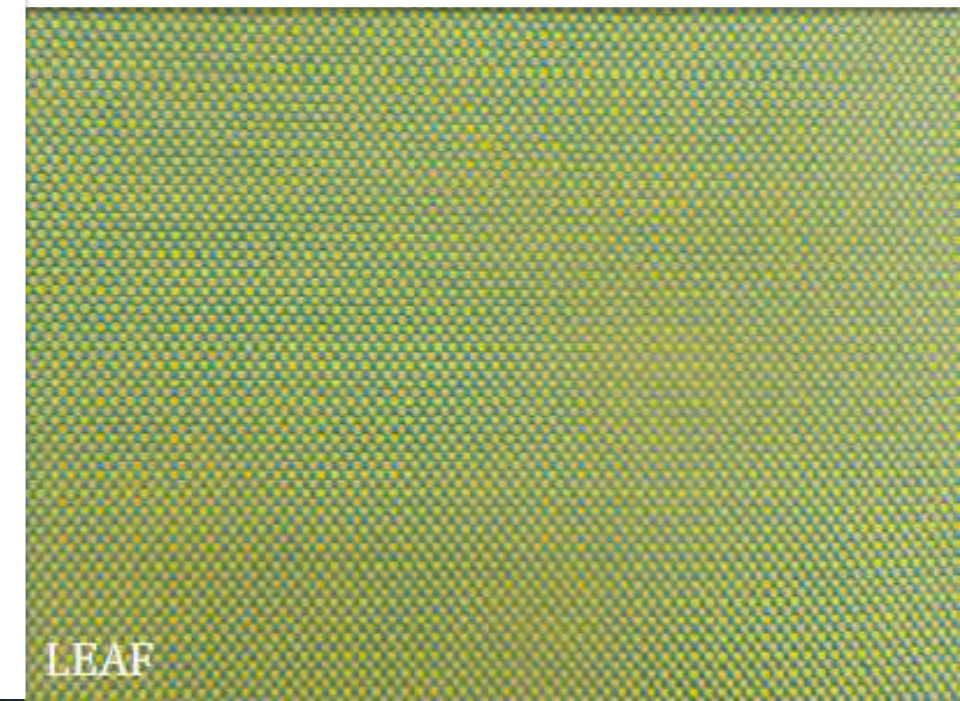
ROYAL BLUE



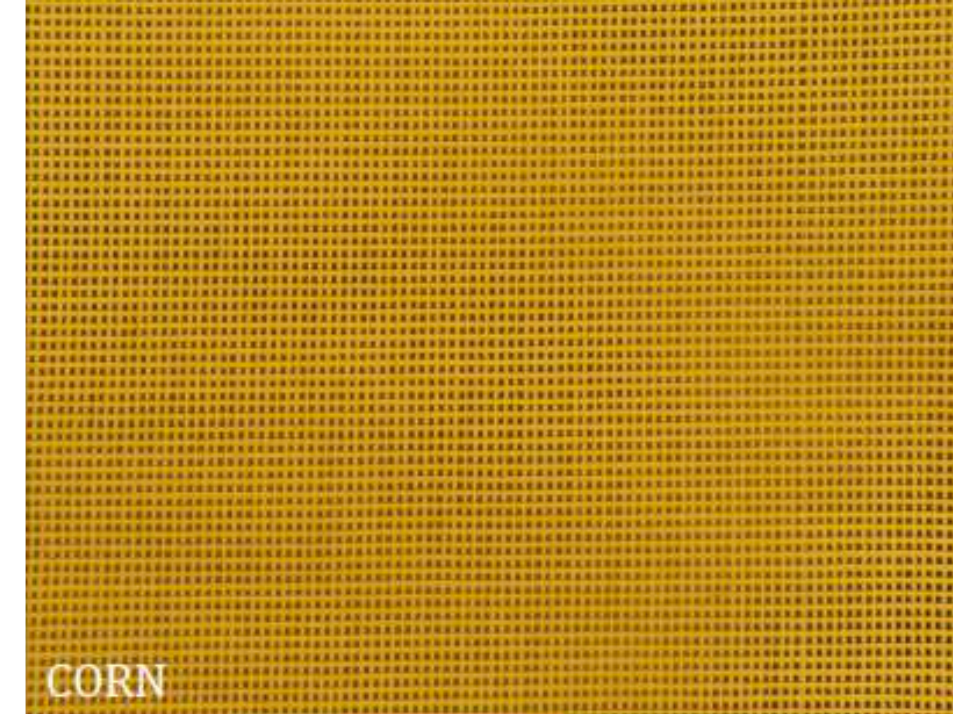
COBALT

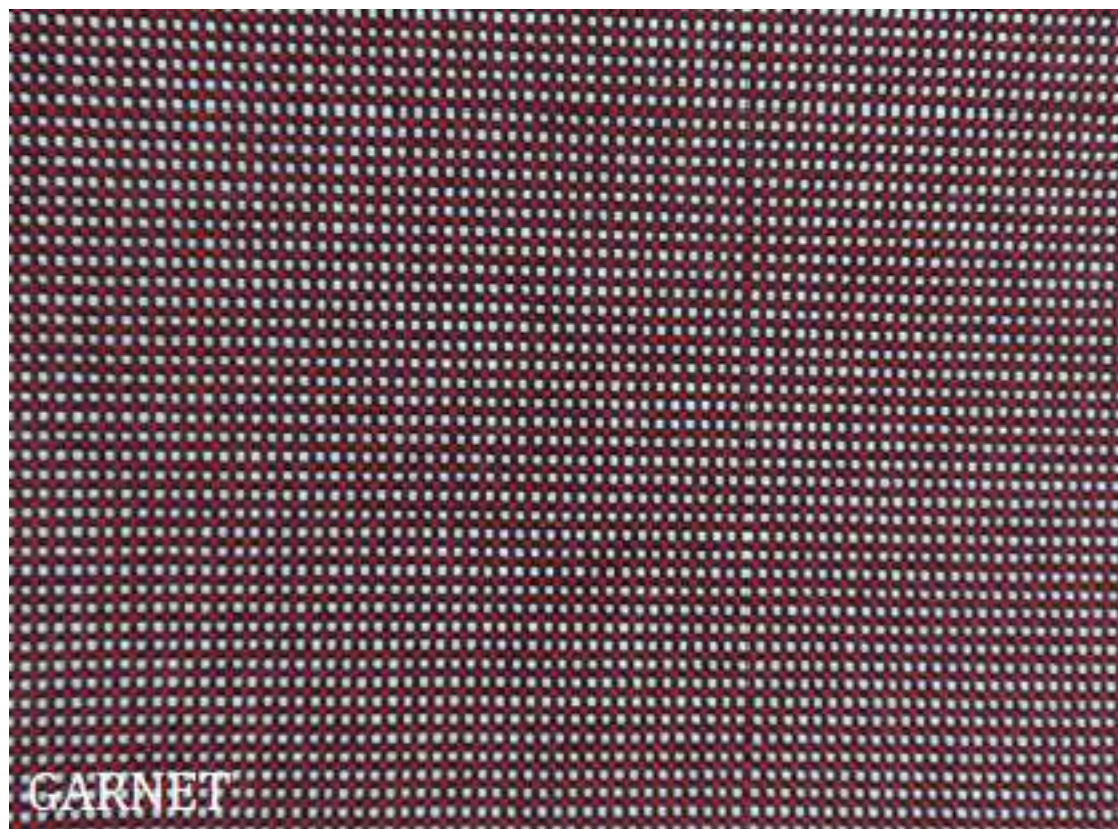


NAVY



LEAF





GARNET

WUUK

ESPECIFICACIONES

DISEÑO

WUUK

COLOR

DOMINÓ
CHESS
SHADOW
CHARCOAL
NAVY
ROYAL BLUE
COBALT
LEAF
CORN
ORANGE
RED
CHERRY
MAGENTA
GARNET

ANCHO

1.40 M

100% POLIÉSTER

INSTRUCCIONES DE LAVADO

Lavar a mano
Uso de plancha
No usar cloro
No usar secadora